

## Equipment

### Standard equipment

Cushion drive wheel  
Polyurethane single load wheels  
Storage compartments (T 18 & T 20)  
Hour meter and battery discharge indicator  
Horn

Key switch  
Mechanical brake  
Battery charge cable and plug  
Protection -10°C

### Optional equipment

Alternative fork lengths and widths  
Wide range of drive wheels  
Wide range of load wheels  
Side battery change (2 & 3 PzS)  
Battery stands for side battery change

Load backrests  
Cold store version -35°C  
  
Other options available on request



## Pallet Truck Capacity 1600, 1800 and 2000 kg T 16, T 18, T 20

SERIES 360

Linde Material Handling

Linde

### Safety

Design of the Linde Pallet Truck is not only good to look at, but also good for protection of the operator. The low skirt ensures that the wheels remain safely within the truck contours. Together with the rounded, smooth shape of the chassis and tiller head, this reduces all risk of injury or damage.

### Performance

The trucks show their true strength in efficiency on the job. Their powerful series-wound motors rated at a continuous output of 1.2 kW, teams up with the LDC control to achieve a top speed of 6 km/h and optimum productivity. Travel speed, acceleration and deceleration can be fully matched to the conditions of the specific application.

### Comfort

Everything the Linde Pallet Truck is meant to do it does easily. And does most of it faster. All controls can be operated with either hand without ever having to let go of the tiller. The handles are made of corrosion-resisting material that is pleasant to the touch.

### Reliability

Rugged construction makes this a truck to rely on. Each tip supports a load of 2,000 kg without bending. The Rimflex motor hood is amazingly solid and avoids damage of material. The low skirt protects the motor reducer from shocks. Features that contribute to considerably longer truck lifetime as well as fast, easy and safe load handling.

### Service

Linde pallet trucks are designed to reduce maintenance costs, and maintain a very high level of productivity over many years. Swift access to all components, the electronics under sealed aluminium housing preserves from shock, dust, and humidity. Features which play an additional part in keeping the Linde Pallet Truck's uptime up.

## Features



### Chassis / Forks

- Rounded contours, no sharp edges
- Robust pressed steel construction
- Low chassis skirt for operator safety
- Sturdy forks, each tip can support a load of 2,000 kg without bending



### Rimflex hood

- Extremely strong, lasts through the lifetime of the truck
- Wide and deep storage space (on T 18 and T 20) for wrapping paper, writing utensils, etc.



### DC motor

- Powerful, smooth-running motor, 1.2 kW maximum output
- Gradeability 10% fully loaded
- No rollback on uphill starting
- Top speed 6 km/h, loaded or unloaded



### Tiller

- Superb protection for operator's hands
- Long tiller provides ample safety clearance between operator and truck chassis
- Low tiller mounting point makes truck easy to steer around sharp turns

### Batteries and chargers

- 24 V batteries from 150 to 375 Ah capacity
- Wide range of chargers, standard and wall-mount type
- Easy battery charging. Fitted with the optional on-board charger, any convenient electric outlet will do for charging (available for batteries of max. 240 Ah capacity)

### Brakes

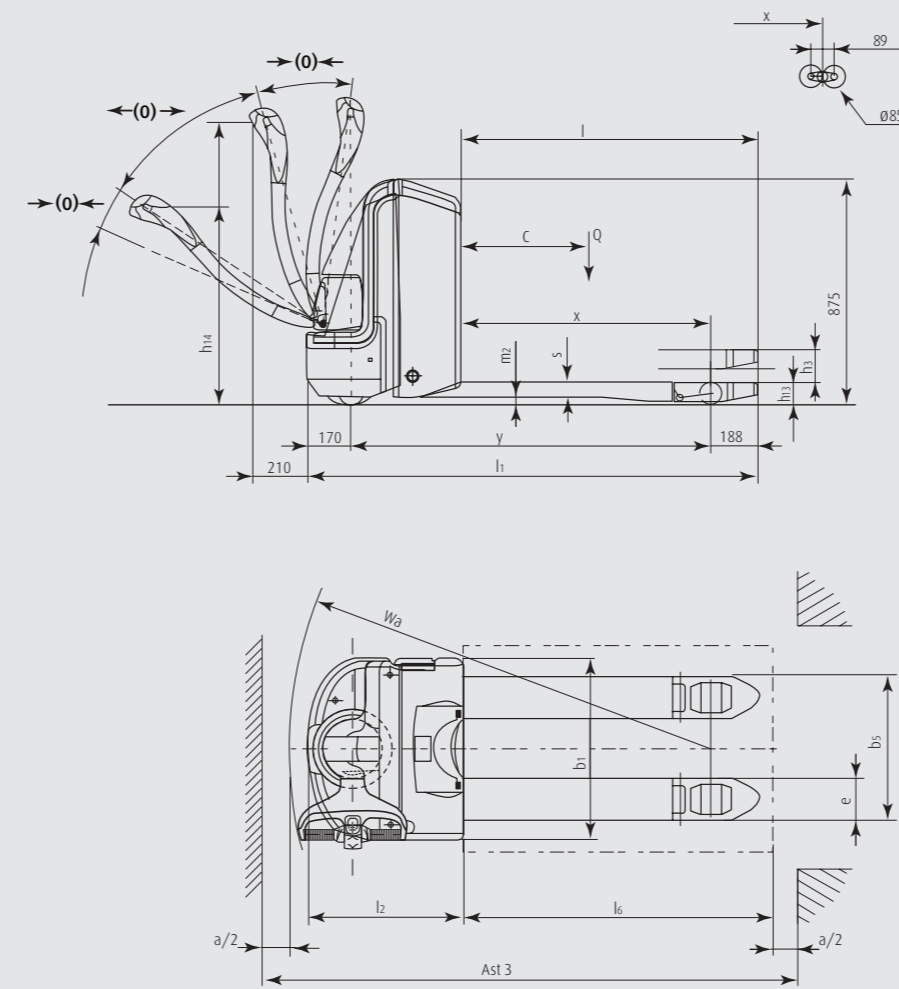
- Efficient mechanical braking by moving tiller to fully up or down position
- Automatic braking on releasing butterfly travel control switch
- Truck slows before coming to a stop, remaining under total control at all times

Subject to change in the interests of progress. Illustrations and technical details non-binding. All dimensions subject to customary tolerance.

# Technical data

		LINDE				
		T16	T18	T20		
Characteristics	1.1	Manufacturer	LINDE	LINDE	LINDE	
	1.2	Model designation	<b>T16</b>	<b>T18</b>	<b>T20</b>	
	1.3	Power unit: Battery, diesel, gasoline, LP gas, AC	Battery	Battery	Battery	
	1.4	Operation: Manual, pedestrian, rider stand, rider seat, order picker	Pedestrian	Pedestrian	Pedestrian	
	1.5	Load capacity	Q (kg)	1600	1800	2000
	1.6	Load center	c (mm)	600	600	600
	1.8	Load distance	x (mm)	880/962 <sup>4)</sup>	880/962 <sup>4)</sup>	880/962 <sup>4)</sup>
	1.9	Wheelbase	y (mm)	1335 <sup>4)</sup>	1390 <sup>4)</sup>	1390 <sup>4)</sup>
	Weights	2.1	Service weight	kg	415	495
2.2		Axle load with load, operator/load side	kg	650/1365	734/1561	808/1697
2.3		Axle load without load, operator/load side	kg	318/97	375/120	379/126
Wheels/Tyres	3.1	Tyres: solid rubber (R), Superelastic (S), pneumatic (P), polyurethane (PU)		R + PU/PU	R + PU/PU	R + PU/PU
	3.2	Tyre size, operator side		230 x 80	230 x 80	230 x 80
	3.3	Tyre size, load side		85 x 105 (2x 85 x 80) <sup>1)</sup>	85 x 105 (2x 85 x 80) <sup>1)</sup>	85 x 105 (2x 85 x 80) <sup>1)</sup>
	3.4	Auxiliary wheels (size)		100 x 40	100 x 40	100 x 40
	3.5	Wheels, number operator/load side (x = driven)		1x + 2/2 (1x + 2/4) <sup>2)</sup>	1x + 2/2 (1x + 2/4) <sup>2)</sup>	1x + 2/2 (1x + 2/4) <sup>2)</sup>
	3.6	Track width, operator side	b10 (mm)	440	440	440
	3.7	Track width, load side	b11 (mm)	395	395	395
Dimensions	4.4	Lift	h3 (mm)	130	130	130
	4.9	Tiller height, travel position, min/max	h14 (mm)	775/1100	775/1100	775/1100
	4.15	Fork height, lowered	h13 (mm)	85	85	85
	4.19	Overall length	l1 (mm)	1695 <sup>4)</sup>	1750 <sup>4)</sup>	1750 <sup>4)</sup>
	4.20	Length to fork face	l2 (mm)	545 <sup>4)</sup>	600 <sup>4)</sup>	600 <sup>4)</sup>
	4.21	Overall width	b1/b2(mm)	700	700	700
	4.22	Fork dimensions	s/e/l (mm)	55 x 165 x 1150	55 x 165 x 1150	55 x 165 x 1150
	4.25	Fork spread	b5 (mm)	560	560	560
	4.32	Ground clearance, center of wheelbase	m2 (mm)	30	30	30
	4.33	Aisle width, 1000 x 1200 mm pallet crosswise	Ast (mm)	1816 <sup>3)</sup>	1868 <sup>3)</sup>	1868 <sup>3)</sup>
	4.34	Aisle width, 800 x 1200 mm pallet lengthwise	Ast (mm)	2016 <sup>4)</sup>	2068 <sup>4)</sup>	2068 <sup>4)</sup>
4.35	Turning radius	Wa (mm)	1578 <sup>4)</sup>	1630 <sup>4)</sup>	1630 <sup>4)</sup>	
Performance	5.1	Travel speed, with/without load	km/h	5.0/6.0	6.0/6.0	6.0/6.0
	5.2	Lift speed, with/without load	m/s	0.035/0.048	0.034/0.049	0.035/0.054
	5.3	Lower speed, with/without load	m/s	0.088/0.035	0.091/0.035	0.066/0.061
	5.7	Climbing ability, with/without load	%	9.5/24	9/24	10/24
5.10	Service brake		Mechanical	Mechanical	Mechanical	
Drive	6.1	Drive motor output (S2, 60 minutes rating)	kW	0.9	1.2	1.2
	6.2	Lift motor output (S3, 15% rating)	kW	0.8	0.8	1.0
	6.3	Battery class		British Standard	DIN 43535 B	DIN 43535 B
	6.4	Battery voltage/rated capacity (5 h)	V/Ah	24/150	24/240	24/240
	6.5	Battery weight	kg	155	234	234
Others	8.1	Traction control		LDC with microprocessor	LDC with microprocessor	LDC with microprocessor
	8.4	Sound level at operator's ear	dB(A)	< 69	< 69	< 69

1) Figures in parentheses for tandem load wheels (optional equipment)  
 2) With 950 mm fork length  
 3) Less 44 mm for tandem load wheels  
 4) See table on right for dimensions with alternative batteries



$$AST = Wa - x + l6 + a$$

Safety clearance a = 200 mm



Battery type	Battery capacity (Ah)	Dimension l2 (mm)	Dimension l1 (mm)	Fork length l (mm)	Turning radius Wa (mm)	Aisle width Pallet 800 x 1200 lengthwise	Aisle width Pallet 1000 x 1200 crosswise
<b>BS</b>	To 150 E	545	1695	950	1496	-	1816
	-	-	-	1150	1578	2016	-
<b>2 PzS</b>	160 - 240	600	1700	950	1548	-	1868
	-	-	-	1150	1630	2068	-
<b>3 PzS*</b>	330	672	1822	950	1619	-	1939
	-	-	-	1150	1701	2139	-

\* not available on T16 model