



Man-down Turret Truck 1000 kg A10

SERIES 040

Safety

The operator is fully protected within the operator's compartment. Three independent braking systems ensure effective stopping power for every eventuality.

The innovative mast concept provides exceptional torsion resistance for impressive stability at high lift heights and the operator has excellent visibility to the forks and load for safe, assured handling operations.

Performance

The powerful motors deliver high-torque performance.

The truck is fitted with the advanced Linde digital control system, which governs the powerful drive and hydraulic pump motors for smooth, seamless acceleration, lift, reach and rotate movements ensuring safe and extremely efficient load handling. This system of energy control optimises the number of work cycles obtained from each battery charge.

Comfort

The spacious operator's compartment has a sideways seating position with a specially designed full suspension seat, which offers lateral, lumbar, weight, and height adjustments so that every operator is able to find the perfect driving position for optimum comfort. This, combined with the highly functional and ergonomic layout of the operating controls, provides a superb, fatigue-free working environment enabling the operator to achieve excellent productivity ratios.

Reliability

The key components of the truck are easily accessible for maintenance and integrated diagnostics ensure reduced servicing intervals. The energy saving Linde digital control system, together with the low-maintenance design of the truck results in maximum uptime and reduced operating costs.

Productivity

A clear view of the turret head and load during storage and retrieval operations as well as good all-round visibility within the very narrow aisles are important prerequisites for cost-effective efficiency and high throughput ratios. Performance is also enhanced by the smooth, responsive hydrostatic steering and the Linde twin accelerator pedal system. Linde very narrow aisle system trucks are designed to achieve maximum utilisation of the available storage space.

Linde Material Handling

Linde

Technical data (according to VDI 2198)

Characteristics	1.1	Manufacturer		LINDE
	1.2	Model designation		A10 ¹⁾
	1.3	Power unit: battery, diesel, petrol, LP gas, mains power		Battery
	1.4	Operation: manual, pedestrian, stand-on, seated, order picker		Rider seated
	1.5	Load capacity	Q (kg)	1000
	1.6	Load centre	c (mm)	600
	1.9	Wheelbase	y (mm)	1595
Weight	2.1	Service weight	kg	4180
	2.2	Axle load with load, drive side/load side	kg	1200/3980
	2.3	Axle load without load, drive side/load side	kg	1640/2540
Chassis	3.1	Tyres: solid rubber, contoured solid, polyurethane		Polyurethane
	3.2	Tyre size, driver side		330 x 135
	3.3	Tyre size, load side		350 x 115
	3.5	Wheels, number drive side/load side (x = driven)		1x/2
	3.6	Track width, drive side	b10 (mm)	0
	3.7	Track width, load side	b11 (mm)	1335
Dimensions	4.2	Height of mast, lowered	h1 (mm)	2750 ²⁾
	4.3	Free lift	h2 (mm)	170
	4.4	Lift	h3 (mm)	3750 ²⁾
	4.5	Height of mast, extended	h4 (mm)	4790
	4.7	Height of overhead guard (cabin)	h6 (mm)	2110
	4.8	Height of seat/stand-on platform	h7 (mm)	990
	4.15	Fork height, lowered	h13 (mm)	60
	4.19	Overall length	l1 (mm)	2940 ³⁾
	4.20	Head centre	A (mm)	560 ³⁾
	4.21	Overall width	b1/b2 (mm)	1450 ³⁾
	4.22	Fork dimensions	s/e/l (mm)	50 x 120 x 800 – 1200
	4.23	Fork carriage to DIN 15 173, class/form A, B		2A
	4.24	Width of fork carriage	b3 (mm)	780
	4.27	Width over side guide rollers	b6 (mm)	1550 – 1650
	4.29	Lateral reach travel	b7 (mm)	1300 ³⁾
	4.31	Ground clearance, mast	m1 (mm)	35
	4.32	Ground clearance, centre of wheelbase	m2 (mm)	75
	4.34	Aisle width with pallet 800 x 1200 lengthwise	Ast (mm)	1650 ³⁾
	4.35	Turning radius	Wa (mm)	1840
	4.38	Centre of axle to fork pivot	l8 (mm)	735 ³⁾
	4.39	Head width	F (mm)	250
4.40	Width of reach carriage	B (mm)	1450 ³⁾	
4.41	End aisle width, with / without load	Au (mm)	3390 ^{3) 4)}	
Performance	5.1	Travel speed, with / without load	km/h	9.0/9.0
	5.2	Lifting speed, with / without load	m/s	0.28/0.35 ⁵⁾
	5.3	Lowering speed, with / without load	m/s	0.45/0.40
	5.4	Reach speed, with / without load	m/s	0.20
	5.7	Climbing ability, with / without load, 30 minute rating	%	-
	5.10	Service brake		Electric/hydraulic
Drive	6.1	Drive motor, 60 minute rating	kW	5.0
	6.2	Lift motor, 15 % rating	kW	9.0
	6.3	Battery according to IEC		254-2
	6.4	Battery voltage / rated capacity (5h)	V/Ah	48/660L
	6.5	Battery weight (± 5 %)	kg	1010
Div.	8.1	Type of drive control		Electronic
	8.4	Noise level at operator's ear	dB(A)	< 70

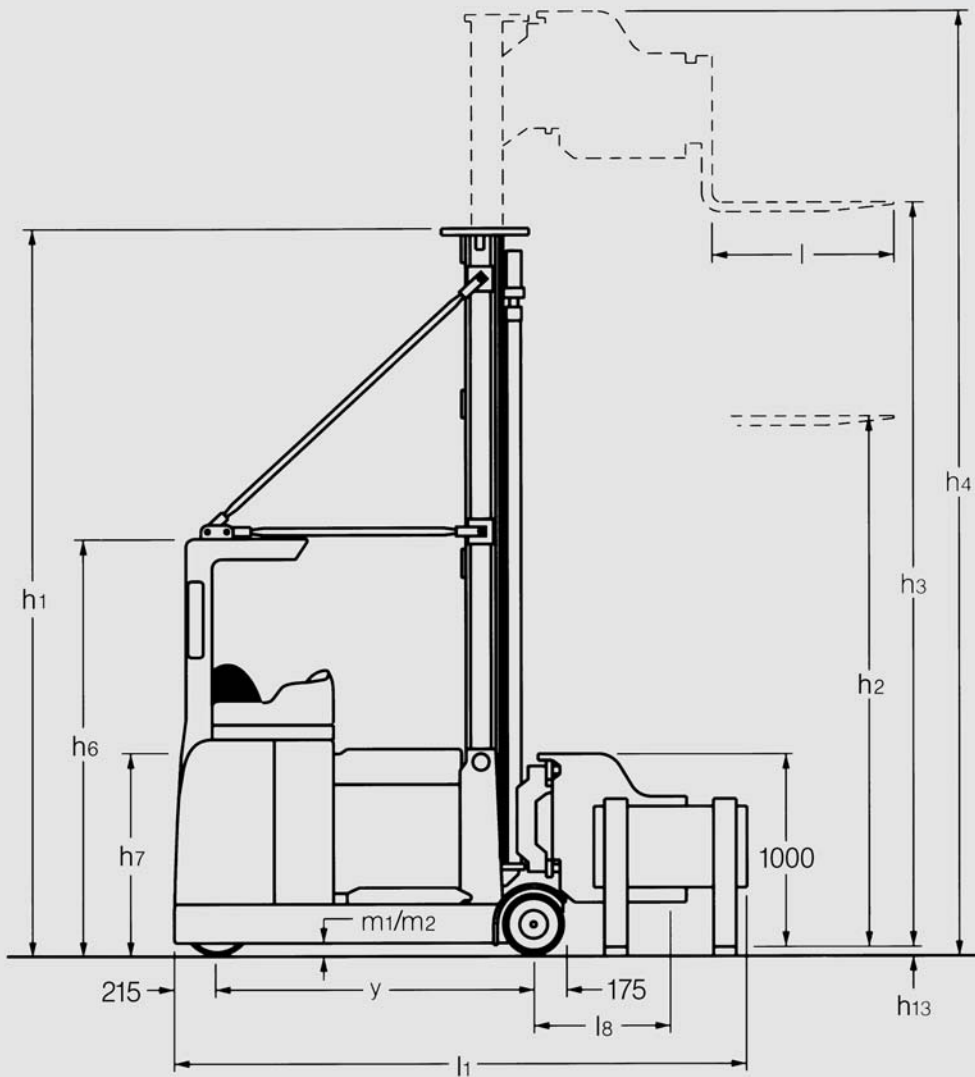
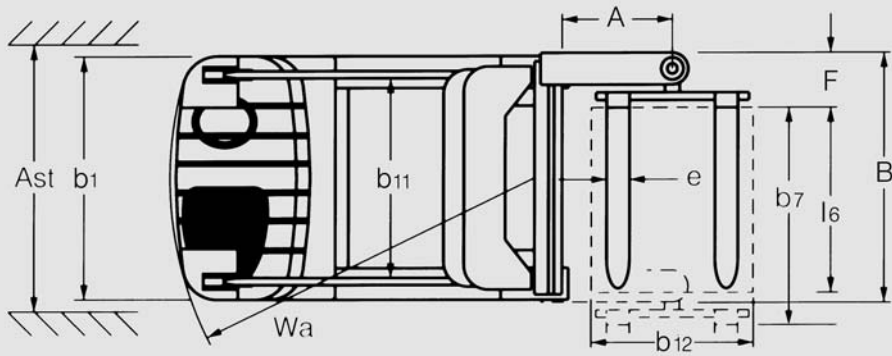
¹⁾ Specification with Standard Lift Mast and L-Head.

²⁾ For alternative lift heights, refer to mast table.

³⁾ With pallet 800 x 1200 mm along forks.

⁴⁾ Including 200 mm (min.) operating aisle clearance.

⁵⁾ On minimum lowered mast height.



STACKING AISLE VARIATIONS "L" head (in mm)									
Load specification	Aisle clearance	Max. load overhang	A Head centre	Ast Aisle width load faces	B Width of reach carr.	F Head mechanism width	b ₁ O/A width	l ₁ O/A length incl. head	Au* End aisle width
EURO pallet	100	none	560	1 650	1 450	250	1 450	2 940	3 390
800 along aisle (b ₁₂)	100	50	560	1 750	1 550	250	1 450	2 940	3 460
1 200 across aisle (l ₆)	150	none	560	1 800	1 500	300	1 450	2 940	3 490
	150	45	560	1 890	1 550	300	1 450	2 940	3 560
ISO (CHEP) Pallet	100	none	560	1 650	1 450	250	1 450	2 940	3 480
1 000 along aisle (b ₁₂)	100	50	660	1 750	1 550	250	1 450	3 140	3 630
1 200 across aisle (l ₆)	150	none	560	1 800	1 500	300	1 450	2 940	3 490
	150	45	660	1 890	1 550	300	1 450	3 140	3 630
ISO (CHEP) Pallet	100	none	660	1 450	1 250	250	1 270	3 140	3 610
1 200 along aisle (b ₁₂)	100	30	660	1 510	1 300	250	1 270	3 140	3 640
1 000 across aisle (l ₆)	150	none	660	1 600	1 300	300	1 270	3 140	3 620
	150	30	660	1 660	1 350	300	1 270	3 140	3 660
EURO Gitterbox	100	none	560	1 700	1 500	250	1 450	2 940	3 420
835 along aisle (b ₁₂)	150	none	560	1 850	1 550	300	1 450	2 940	3 430
1 240 across aisle (l ₆)									
ISO Gitterbox	100	none	660	1 700	1 500	250	1 450	3 140	3 590
1 040 along aisle (b ₁₂)	150	none	660	1 850	1 550	300	1 450	3 140	3 600
1 240 across aisle (l ₆)									
ISO Gitterbox	100	none	660	1 500	1 300	250	1 270	3 140	3 640
1 240 along aisle (b ₁₂)	150	none	660	1 650	1 350	300	1 270	3 140	3 650
1040 across aisle (l ₆)									

*For side guided trucks only.

Includes 200 mm safety distance.

MAST UNIT VARIATIONS (in mm) Standard clearview mast – "L" head													
h ₃	Lift	3 750	4 050	4 350	4 650	4 950	5 250	5 550	5 850	6 150	6 450	6 750	7 050
h ₃ +h ₁₃	Lift height	3 810	4 110	4 410	4 710	5 010	5 310	5 610	5 910	6 210	6 510	6 810	7 110
h ₂	Free lift	170	170	170	170	170	170	170	170	170	170	170	170
h ₁	Height, mast lowered	2 750	2 900	3 050	3 200	3 350	3 500	3 650*	3 800*	3 950*	4 100*	4 250*	4 400*
h ₄	Height, mast extended	4 790	5 090	5 390	5 690	5 990	6 290	6 590	6 890	7 190	7 490	7 790	8 090

Triplex clearview mast – "L" head											
h ₃	Lift	4 550	5 050	5 550	6 050	6 550	7 050	7 550	8 050	8 550	9 050
h ₃ +h ₁₃	Lift height	4 610	5 110	5 610	6 110	6 610	7 110	7 610	8 110	8 610	9 110
h ₂	Free lift	1 540	1 740	1 940	2 140	2 340	2 540	2 740	2 940	3 140	3 340
h ₁	Height, mast lowered	2 540	2 740	2 940	3 140*	3 340*	3 540*	3 740*	3 940*	4 140*	4 340*
h ₄	Height, mast extended	5 590	6 090	6 590	7 090	7 590	8 090	8 590	9 090	9 590	10 090

* fitted with mast tie-rods as standard.

Equipment

Standard equipment

Fully adjustable comfort-class suspension seat

Hydrostatic power steering (Switched off in guided aisles)

Instrument display (operating hours, battery status, brush wear, brake fluid level, motor temperature)

Steering position indicator

Linde twin accelerator pedals

Linde digital control

Individual control levers

Mast and turret head according to application

Simultaneous lift and traction

Three independent braking systems

Emergency circuit isolator

Traction isolated by seat switch

Side guidance for standard or low profile rails

Electric horn

Polycarbonate screen protection on console

5 kW drive motor

9 kW lift motor

Optional equipment

Mesh or polycarbonate covers on overhead guard

Heated pvc seat

Alternative battery capacities up to 750 Ah

Battery cable with plug for additional battery

Clearview Standard and triplex masts to 9050 mm lift height

Range of lighting equipment

Telescopic forks

Interlocks to suit application

Cold store protection to - 30 °C

Other options available on request

Features

Operator's compartment

- Comfort-class seat with excellent side support adjustable for body weight, height, seat position, backrest angle
- All-round view of load and environment
- Linde twin accelerator pedal system
- Effortless, on-demand hydrostatic power steering
- Spacious foot well for easy access and generous leg room



Storage/retrieval

- The telescopic fork unit can transfer open based pallets from one side of the aisle to the other without rotation and therefore offers the narrowest aisle possibilities
- The 'L' head has hydraulically operated reach and rotate functions and can handle both closed and open based pallets. It is also able to pick up or place pallets directly on the floor

Chassis and mast

- Excellent visibility due to the slim profile mast channels
- Chassis designed for maximum structural integrity, durability and stability
- Overhead guard protects operator's compartment and enhances stability



Brakes

- Three independent braking systems for optimum safety at all times
 1. Hydraulic service brake on load wheels actuated by footbrake
 2. Controlled wear-free electric braking by selection of opposite direction of travel
 3. Parking brake



Drive and lift

- Powerful 5 kW drive motor for high acceleration rates
- Powerful 9 kW hydraulic motor for rapid lift cycles



Controller

- The energy saving Linde digital controller ensures smooth, seamless acceleration, lift, reach and rotate movements
- The powerful drive and lift motor capabilities are controlled with exceptional accuracy and precision
- The performance and oil flow of the hydraulic unit is automatically optimized for efficiency and economy

Linde twin accelerator pedals

- Both feet remain on accelerator pedals for rapid direction changes
- Short pedal strokes
- No strain on feet or ankles
- Increased productivity

Instrument display

- Combined hour meter and battery state of charge
- Brush wear indicator
- Brake fluid levels
- Motor temperature

